

The recommended pairs for sandwich immunoassay:

16B5 ——— 42
 14A2 ——— 42
 24B2 ——— 38F11
 13G11 ——— 42
 16B5 ——— 44D9
 24B2 ——— 13B9
 14C12 ——— 38F11

The antibody pair 24B2 – 13B9 can be used for the immunodetection of both PCT and free calcitonin.

MAbs may also be used for PCT detection in immunoblotting. All MAbs recognize PCT in Western Blotting after SDS-electrophoresis in reducing conditions (Fig 39).

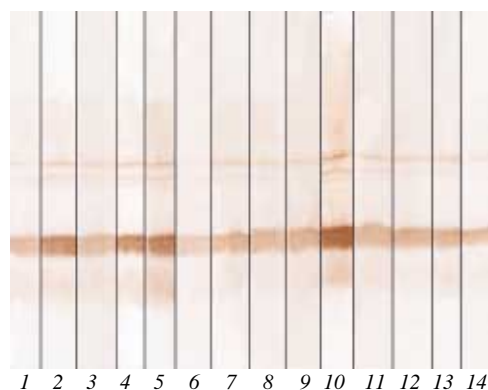


Fig. 39. Immunodetection of human recombinant PCT in Western blotting by monoclonal antibodies specific to different PCT fragments after 15 % SDS-PAGE in reducing conditions. Antigen: 100 ng/track.

- 1 – MAb 6F10
- 2 – MAb 27A3
- 3 – MAb 38F11
- 4 – MAb 44D9
- 5 – MAb 42
- 6 – MAb 13B9
- 7 – MAb 13F2
- 8 – MAb 13G11
- 9 – MAb 14A2
- 10 – MAb 16B5
- 11 – MAb 24B2
- 12 – MAb 14C12
- 13 – MAb 18B7
- 14 – MAb 22A11

Ordering information

| Clone | Cat. # | Specificity (part of PCT) | Subclass | Application |
|-------|--------|-------------------------------|----------|--|
| 6F10 | 4PC47 | N-terminal fragment | IgG1 | EIA, Sandwich immunoassay (capture), WB |
| 27A3 | 4PC47 | N-terminal fragment | IgG2a | EIA, Sandwich immunoassay (capture), WB |
| 38F11 | 4PC47 | N-terminal fragment | IgG1 | EIA, Sandwich immunoassay (capture), WB |
| 44D9 | 4PC47 | N-terminal fragment | IgG2a | EIA, Sandwich immunoassay (detection), WB |
| 42 | 4PC47 | N-terminal fragment | IgG2a | EIA, Sandwich immunoassay (detection), WB |
| 13B9 | 4PC47 | calcitonin (central part) | IgG2a | EIA, Sandwich immunoassay (detection), WB |
| 13F2 | 4PC47 | calcitonin (central part) | IgG1 | EIA, Sandwich immunoassay (capture), WB |
| 13G11 | 4PC47 | calcitonin (central part) | IgG1 | EIA, Sandwich immunoassay (capture), WB |
| 14A2 | 4PC47 | calcitonin (central part) | IgG1 | EIA, Sandwich immunoassay (capture, detection), WB |
| 16B5 | 4PC47 | calcitonin (central part) | IgG2b | EIA, Sandwich immunoassay (capture, detection), WB |
| 24B2 | 4PC47 | calcitonin (central part) | IgG1 | EIA, Sandwich immunoassay (capture), WB |
| 14C12 | 4PC47 | katacalcine (C-terminal part) | IgG1 | EIA, Sandwich immunoassay (capture), WB |
| 18B7 | 4PC47 | katacalcine (C-terminal part) | IgG1 | EIA, Sandwich immunoassay (detection), WB |
| 22A11 | 4PC47 | katacalcine (C-terminal part) | IgG1 | EIA, Sandwich immunoassay (detection), WB |

References:

1. Le Moulec J.M., et al. The complete sequence of human procalcitonin. // *FEBS Lett.*, 167 (1), 93-97 (1984)
2. Assicot M, et al. High serum procalcitonin concentrations in patients with sepsis and infection. // *Lancet*, 341, 515-18 (1993)
3. Meisner M., Reinhart K. Is procalcitonin really a marker of sepsis? // *Int. J. Intensive Care*, 8 (1), 15-25. (2001)
4. Potapov EV, et al. Elevated donor cardiac troponin T and procalcitonin indicate two independent mechanisms of early graft failure after heart transplantation. // *Int. J. Cardiol.*, 92 (2-3), 163-7 (2003)